

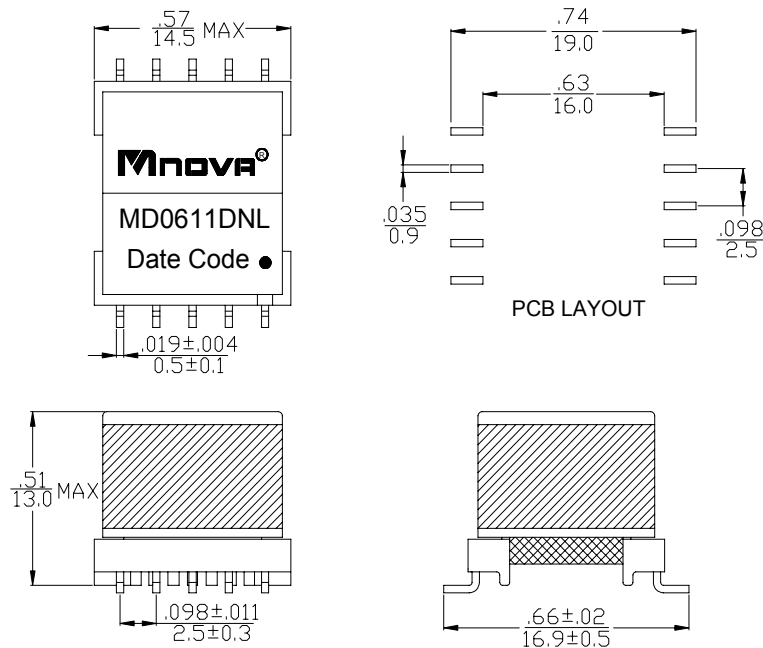
- Designed to meet UL 60950
- Working voltage up to 250Vrms
- Excellent THD performance
- ROHS Compliance Product
- Operating Temperature range: -40°C TO +85°C



### Electrical Specifications @ 25°C

P/N	T/R	OCL@10KHz 0.1V	LL@100KHz 0.1V	Hi-Pot
MD0611DNL	(1-4) : (10-7), (tie 2+3, 8+9)	(1-4) , (tie 2+3)	(1-4) (tie 2+3, 10+8+9+7)	PRI TO SEC
	2:1±1%	1.5mH ±5%	15µH MAX	1500V AC 1mA 6s
	DCR		CWW@100KHz 0.1V	THD@30KHz,4V
	(1-4) , (tie 2+3)	(10-7) ,(tie 8+9)	(1-10),(tie2+3,8+9)	-
	1.76Ω MAX	1.0Ω MAX	50PF MAX	-80 MAX

### DIMENSIONS (unit: inch/mm):



### SCHEMATICS:

