

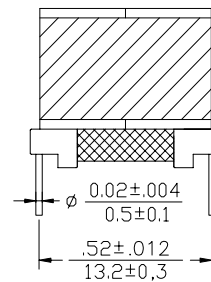
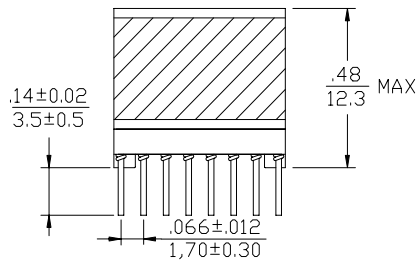
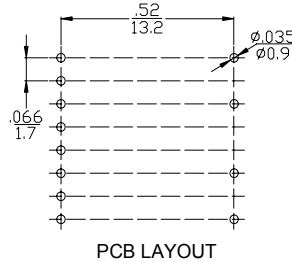
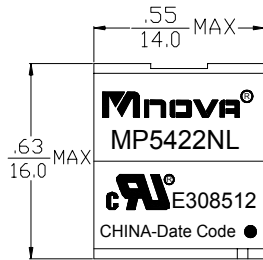
- Designed to meet UL 60950
- Working voltage up to 250Vrms
- Excellent THD performance
- ROHS Compliance Product
- Operating Temperature range: -40°C TO +85°C



### Electrical Specifications @ 25°C

P/N	T/R		OCL@10KHz 0.1V	Hi-Pot	
MP5422NL	(16-9):(1-4),(tie11+14,2+3)		(16-9):(5-8),(tie11+14,6+7)	(16-9),(tie11+14)	PRI TO SEC
	1:1±1%		4.25:1±1%	400µH ±5%	2500V AC,1mA 60s
	DCR		LL@100KHz 0.1V	CWW@100KHz 0.1V	
	(1-4),(tie2+3)	(5-8),(tie6+7)	(16-9),(tie11+14)	(16-9) (tie11+14,2+3,1+4,6+7,5+8)	(16-1) (tie16+14+11+9,1+2+3+4+5+6+7+8)
	0.60Ω MAX	2.0Ω MAX	1.0Ω MAX	20µH MAX	35pF MAX

### DIMENSIONS (unit: inch/mm):



### SCHEMATICS:

