

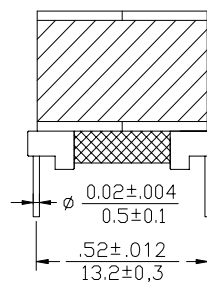
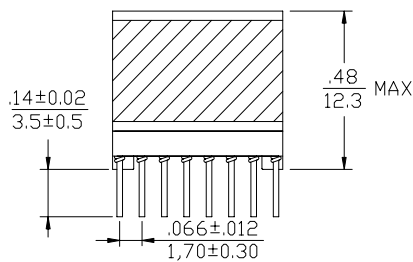
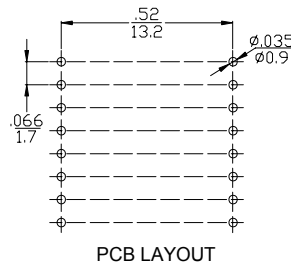
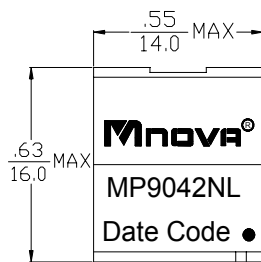
- Designed to meet UL 60950
- Working voltage up to 250Vrms
- Excellent THD performance
- ROHS Compliance Product
- Operating Temperature range: -40°C TO +85°C



Electrical Specifications @ 25°C

P/N	T/R		OCL@10KHz 0.1V	Hi-Pot	
MP9042NL	(16-9):(1-4),(tie11+14,2+3)		(16-9):(5-8),(tie11+14,6+7)	(16-9),(tie11+14)	
	1:1±1%		4.29:1±1%	2.0mH±5.8%	
	CWW @ 100KHz 0.1V			THD @ 25KHz11.0V p-p	
	(1-4)TO(5-8),(tie2+3,7+6)		(1-4)TO(16-9),(tie11+14,2+3)	(16-9)TO(5-8),(tie11+14,7+6)	-
	60pF MAX		15pF MAX	15pF MAX	-82dB Min
	DCR		LL @ 100KHz 0.1V		
	(5-7)=(6-8)	(1-3)=(2-4)	(16-11)=(14-9)	(1-4) (tie16+14+11+9,2+3,5+7+6+8)	(5-8) tie(16+14+11+9,1+2+3+4,7+6)
	0.3Ω MAX	0.95Ω MAX	0.5Ω MAX	20μH MAX	3.0μH MAX

DIMENSIONS (unit: inch/mm):



SCHEMATICS:

