

# HOMEPLUG POWERLINE TRANSFORMER

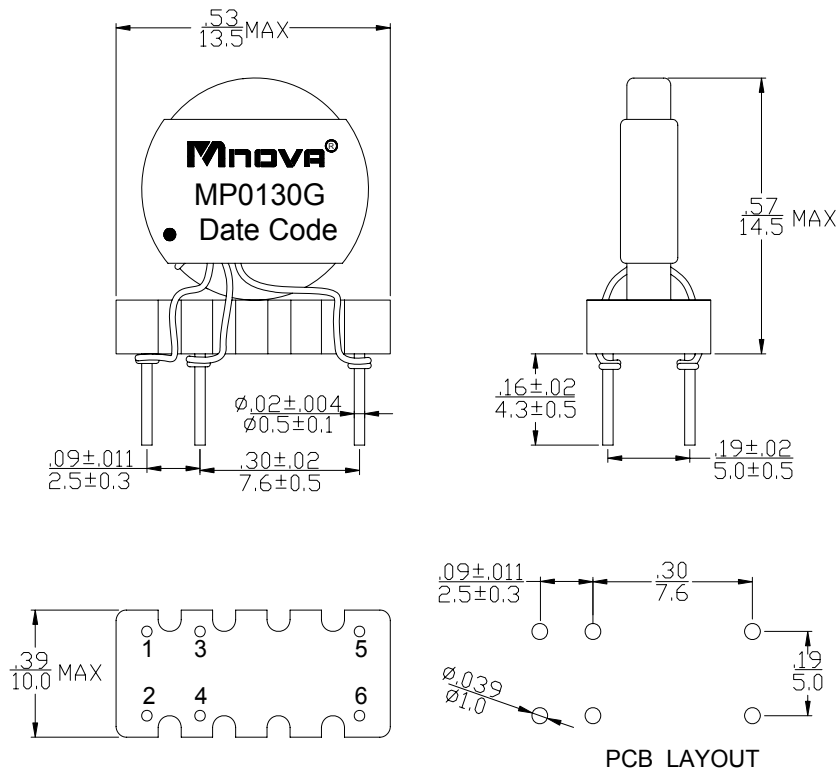
- Set of transformer Signal Coupling for Power Line
- Designed to meet UL 60950
- ROHS Compliance Product
- Operating Temperature range: 0°C TO +70°C



## Electrical Specifications @ 25°C

| P/N     | T/R                   | OCL @ 100KHz 0.1V | DCR           |          | Hi-Pot         |
|---------|-----------------------|-------------------|---------------|----------|----------------|
| MP0130G | (1-2) : (3-4) : (5-6) | (5-6)             | (1-2) = (3-4) | (5-6)    | PRI TO SEC     |
|         | 1 : 1 : 1             | 8μH ~15μH         | 25mΩ MAX      | 28mΩ MAX | 3000VAC,1mA 3s |

## DIMENSIONS (unit: inch/mm):



## SCHEMATICS:

