

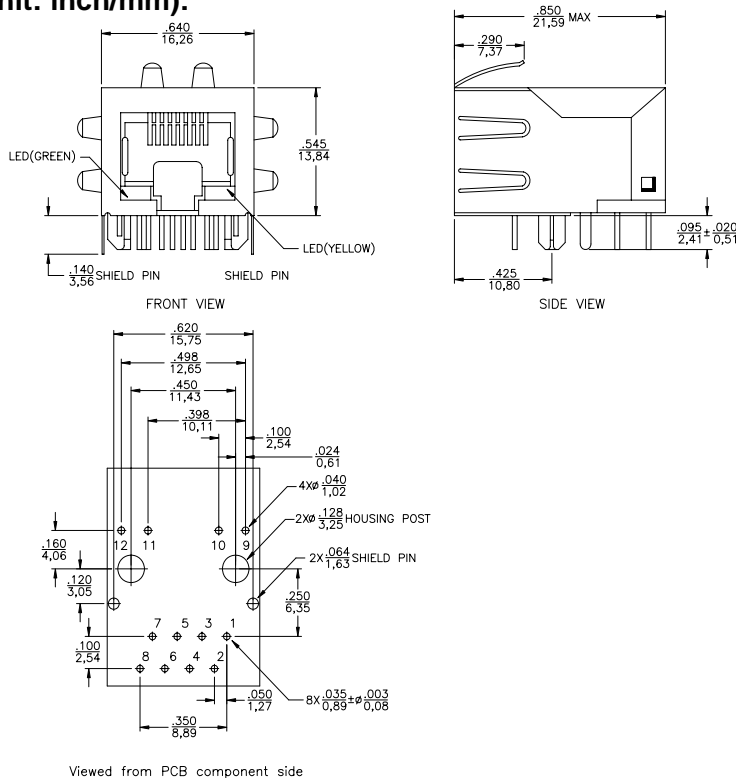
- 10/100 BASE - TX NIC APPLICATIONS
- ROHS Compliance Product
- Meets IEEE 802.3 specification
- Operating Temperature range: 0°C TO +70°C



### Electrical Specifications @ 25°C

P/N	T/R	DCR	OCL@100KHz 100mV 8mA DC		LL@100KHz 0.1V	Hi-Pot
MRJ45-107LED	TX&RX	all connected pins	TX&RX		TX&RX	PEC to SEC
	1CT:1CT±3%	1.2Ω MAX	350μH MIN		0.5μH MAX	1500V AC 1mA 6S
	<b>IL</b>	<b>RL</b>		<b>CT</b>		
	100KHz ~ 100MHz	40MHz	50MHz	60-80MHz	1MHz~100MHz	
	-1.0dB Max	-14dB Min	-13dB Min	-12dB Min	-35dB Min	

### DIMENSIONS (unit: inch/mm):



### SCHEMATICS:

